



LEUPHANA
UNIVERSITÄT LÜNEBURG



Lifelong Learning through Volunteering: Principles

Sonja Moissidis

VALUE Meeting in Lille, 17th November 2010



Lifelong Learning through Volunteering: Principles



1. Institutional Strategy

Leuphana University: an Institution for Lifelong Learning

2. Volunteering as a Method for Teaching and Learning

Volunteering as Integral Part of University Studies

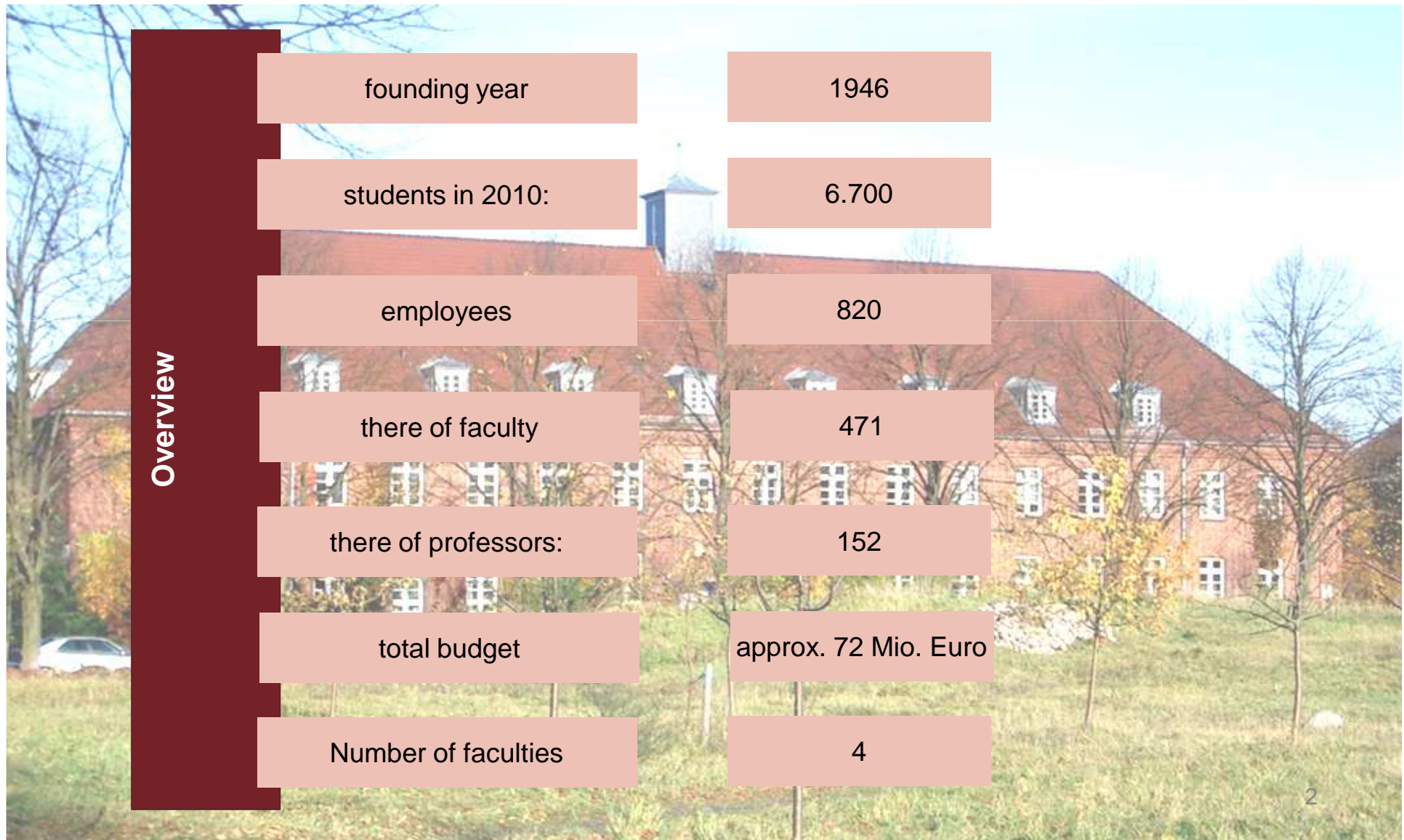
3. Examples

University-Volunteering Projects at Leuphana



Leuphana University - An Institution for Lifelong Learning

Facts and Figures





Leuphana University - An Institution for Lifelong Learning

The University's values

Leuphana University is reorganizing and repositioning itself as a

- humanistic
- sustainable
- action-oriented

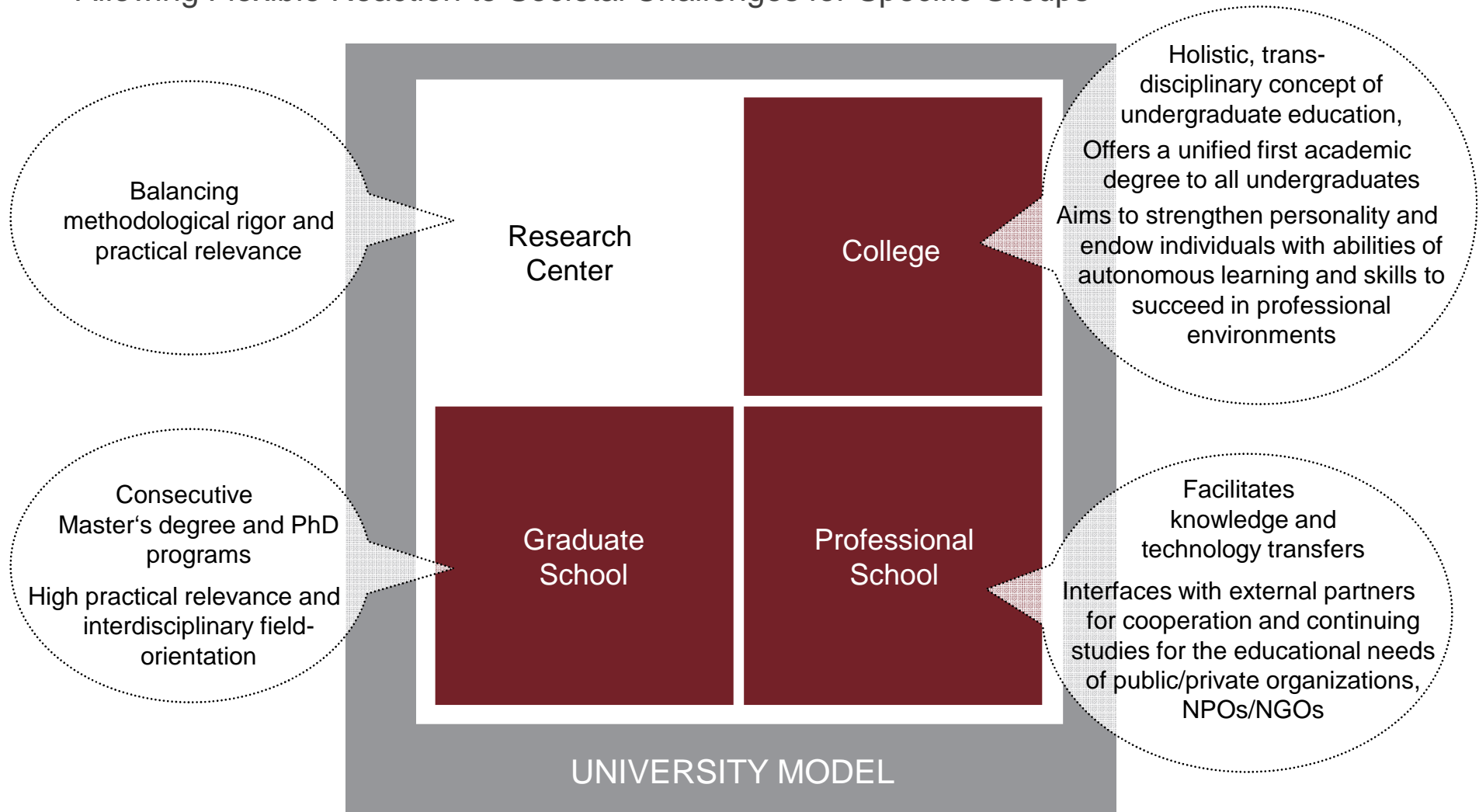
institution of higher education which is dedicated to contributing to lifelong learning for the greater benefit of society.





Leuphana University - An Institution for Lifelong Learning

Allowing Flexible Reaction to Societal Challenges for Specific Groups





Leuphana's Lifelong Learning Strategy

Reflecting the 10 Points of the EUA Charter

1. **Embedding concepts** of widening access and lifelong learning into each university's institutional strategy
2. Providing education and learning to a **diversified student population**
3. Adapting study programmes to ensure that they are designed to **widen participation** and attract returning **adult learners**
4. Providing appropriate **guidance and counselling** services
5. Recognising **prior learning**
6. Embracing lifelong learning in **quality culture**
7. **Strengthening the relationship** between research, teaching and innovation in a perspective of lifelong learning
8. Consolidating reforms to promote a **flexible and creative learning environment** for all students
9. Developing **partnerships** at local, regional, national and international level to provide attractive and relevant programmes
10. Acting as **role models** of lifelong learning institutions



Lifelong Learning through Volunteering: Principles



1. Institutional Strategy

Leuphana University: an Institution for Lifelong Learning

2. Volunteering as a Method for Teaching and Learning

Volunteering as Integral Part of University Studies

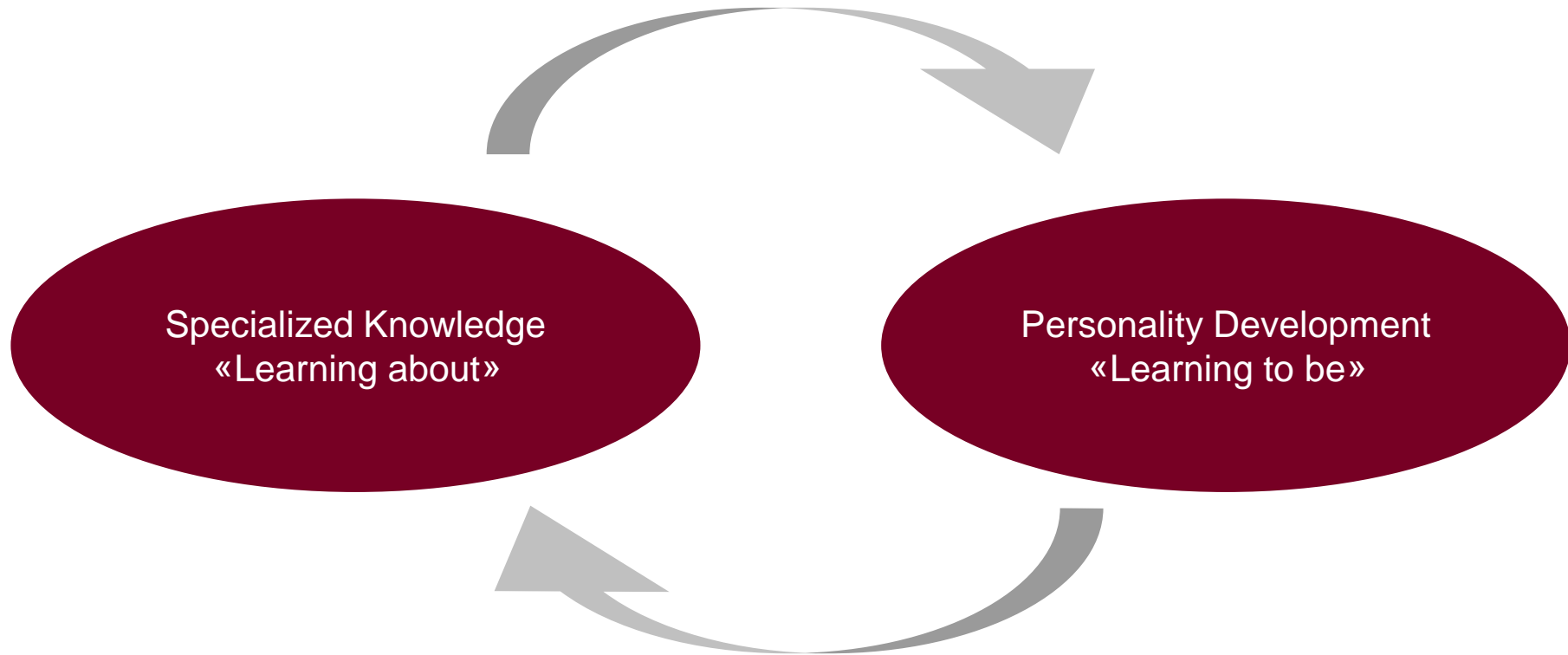
3. Examples

University–Volunteering Projects at Leuphana



Volunteering as a Method for Teaching and Learning

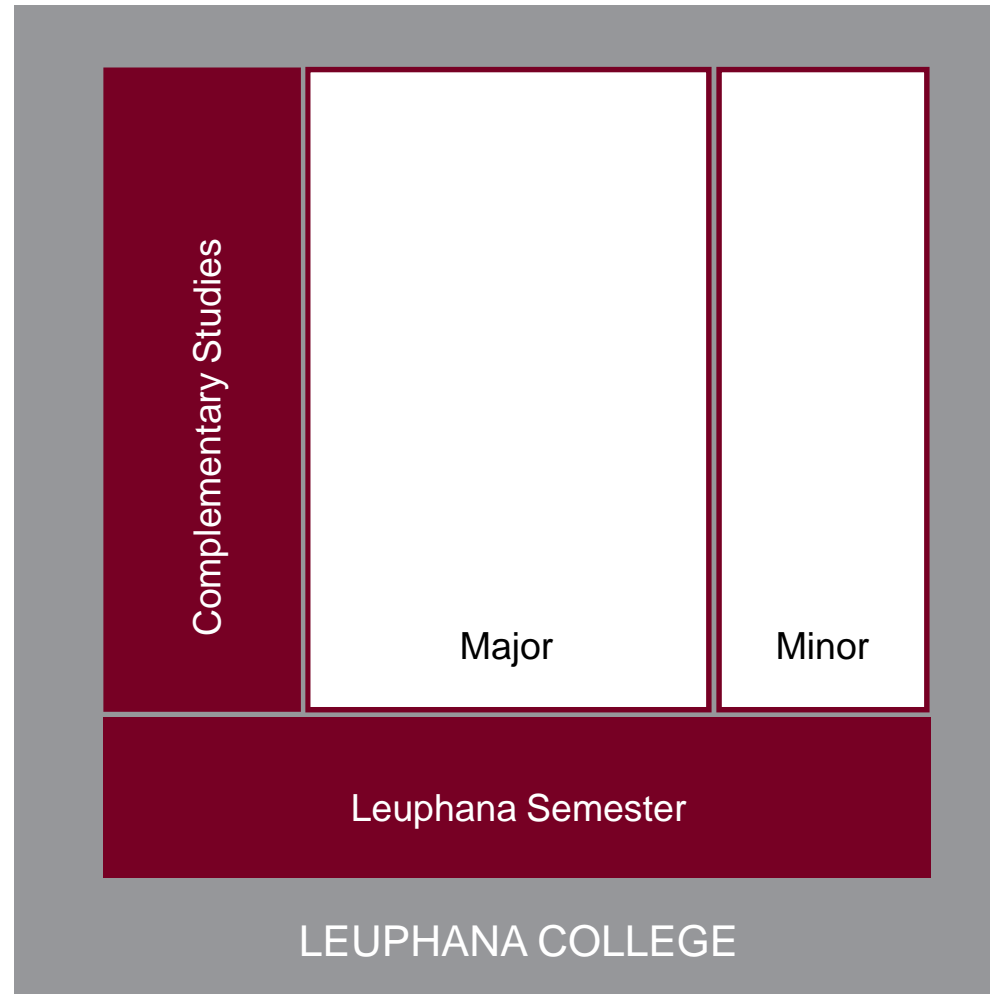
Core Concept of the Leuphana Bachelor





Volunteering as a Method for Teaching and Learning at Leuphana College

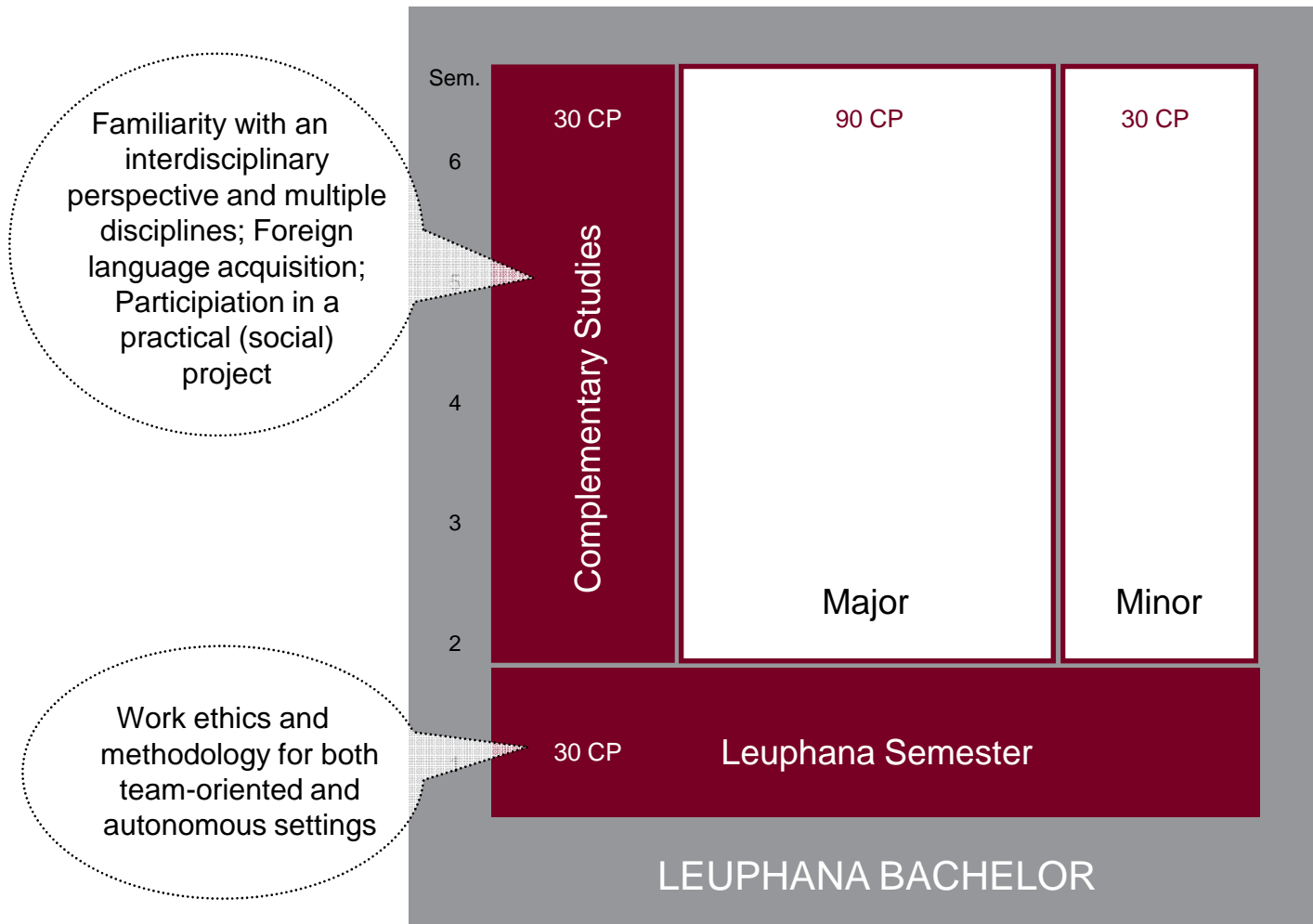
a unified model of study for all subjects including the Leuphana Semester, Complementary Studies, Major und Minor





Leuphana Semester and Complementary Studies

Including Volunteering as a Method for Teaching and Learning



Familiarity with an interdisciplinary perspective and multiple disciplines; Foreign language acquisition; Participation in a practical (social) project

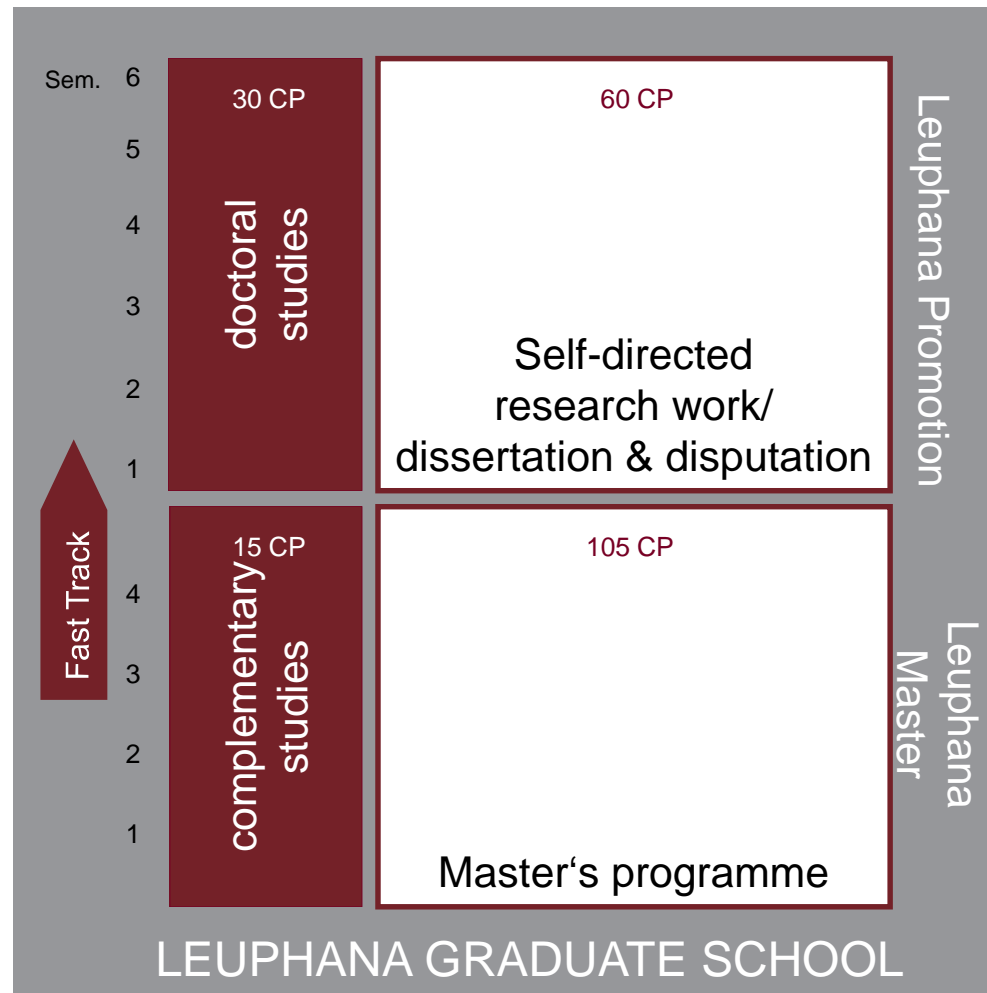
Work ethics and methodology for both team-oriented and autonomous settings

CP = Credit Points



Volunteering as a Method for Teaching and Learning at Leuphana Graduate School

Master's programmes with integrated Complementary Studies





Lifelong Learning through Volunteering: Principles



1. Institutional Strategy

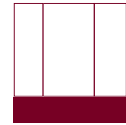
Leuphana University: an Institution for Lifelong Learning

2. Volunteering as a Method for Teaching and Learning

Volunteering as Integral Part of University Studies

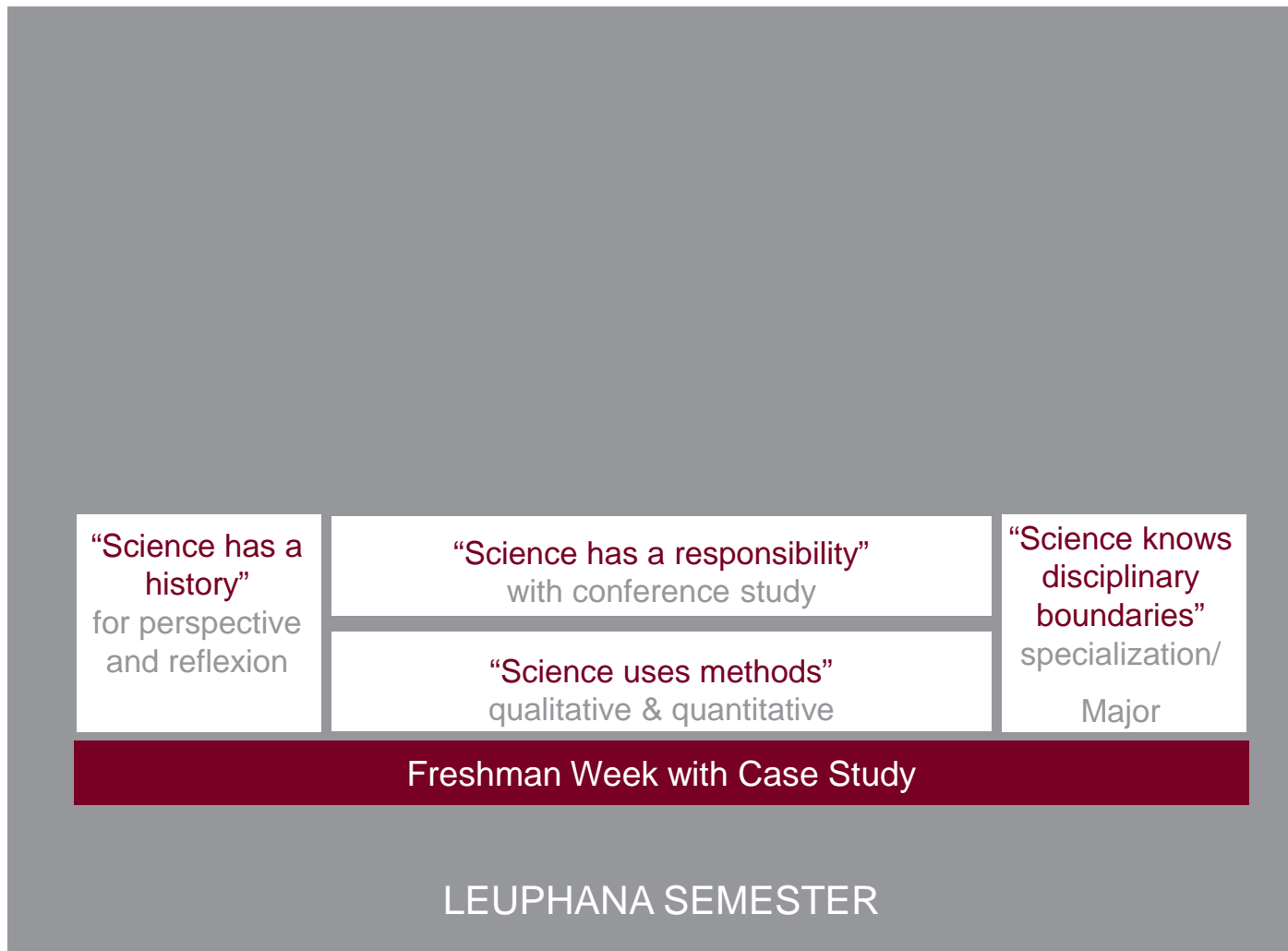
3. Examples

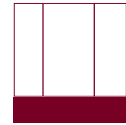
University-Volunteering Projects at Leuphana



Example: The Leuphana Semester

University Volunteering during the bachelor's students Leuphana semester





Example: The Leuphana Semester

Helping lone warriors to become a durable community of learners

- Emotional identification with degree program and university
- Acceptance into the scientific community of learning
- Creating a welcoming social atmosphere on campus
- Mentoring to ensure productivity and success from the start

“Science has a History”
for perspective
and reflexion

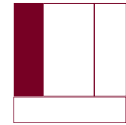
“Science has a Responsibility”
with Conference Study

“Science uses Methods”
qualitative & quantitative

“Science knows disciplinary boundaries”
specialization/
Major

Freshman Week with Case Study

LEUPHANA SEMESTER



Examples for Bachelor's and Master's degrees The Complementary Studies

"Project & Practice"
entrepreneurial

"Understanding & Change"
humanities, social and cultural sciences

"Technology & Environment"
natural and technical sciences

"Art & Aesthetics"
creative, reflexive, discursive

"Language & Culture"
socio-linguistic, intercultural

"Methods & Measuring"
interdisciplinary, application-oriented

- minimum requirement:
three of six perspectives
- visible, close ties to
community and region
through focus on practical
application
- social learning as a
fundamental component
- each perspective requires
the academic mastering of
a subject, a topic or a
problem

COMPLEMENTARY STUDIES



Lifelong Learning through Volunteering

Recent Projects in complementary studies

1. "Linie 1" Young Musical –Project seminar

- cooperation between Theater Lüneburg and the initiative Haute Culture e.V.
- Students and theatre experts explore topics like marketing, drama, organisation, finances und sponsoring at first theoretically, then on a practical project

2. Summer academy

- Advisory support and work by students for lower secondary school pupils
- Students learn about cognitive, social care, psychological, communication aspects and can choose school subject modules
- Tutoring of school kids takes place during summer academy and counselling during one year afterwards

3. Volunteering and critical science

- a seminar covers the theoretical background, political framework and practical relevance of volunteering and active citizenship

4. MBA Sustainability Management

- Cooperation with blind people's museum „Dialogue in the dark“



Leuphana's Cooperations with External Partners

Opportunities for Work Experience and Volunteering

Cooperation partners	Jimmy and Rosalynn Carter Partnership Foundation	<ul style="list-style-type: none">• Promotion of „service learning“, visit to Lüneburg by President Carter to inaugurate Leuphana College, October 2007
	Otto Group	<ul style="list-style-type: none">• Scholarship program for students at the college• planned Executive Program for high potentials
	Haniel Stiftung	<ul style="list-style-type: none">• Haniel Seminars, with post-doctoral places and teaching posts/guest professorships, jointly with St. Gallen University
	DGB, Siemens AG, Bundesagentur für Arbeit	<ul style="list-style-type: none">• Summer camps for the encouragement of lower ability students – pilot project carried out in summer 2007
	AWO / Der Paritätische	<ul style="list-style-type: none">• Development of joint transfer centre (further education, research activities, joint study course in Social Management)
	Bertelsmann AG	<ul style="list-style-type: none">• Establishment of academic advisory committee on the topic of blended learning
	Federal Employment Office/ Bistum Hildesheim	<ul style="list-style-type: none">• One academic staff post each, in support of the restructuring process
	3C Consulting climate agency	<ul style="list-style-type: none">• Conversion into a climate neutral campus
	Lüneburg and the region	<ul style="list-style-type: none">• General agreement to support the restructuring process and the development of the University's location



Thank you very much for your attention.



Leuphana University of Lüneburg
Institute for Performance Management
Wilschenbrucher Weg 84 · D - 21335 Lüneburg
Phone +49.4131.677-7771 · Fax +49.4131.677-7982
sonja.moissidis@uni.leuphana.de

www.leuphana.de/ipm